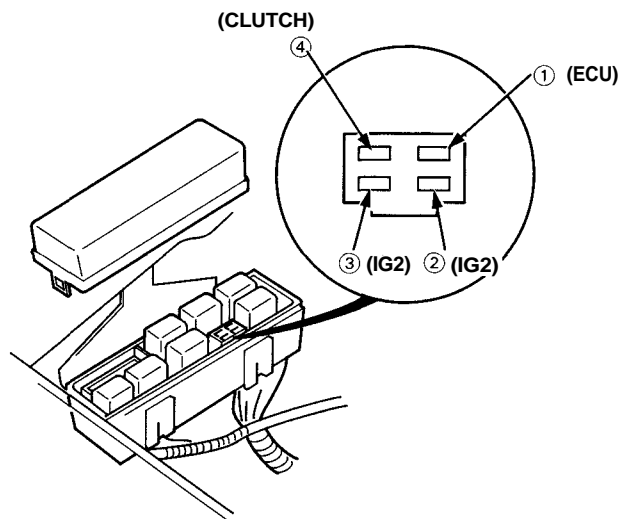
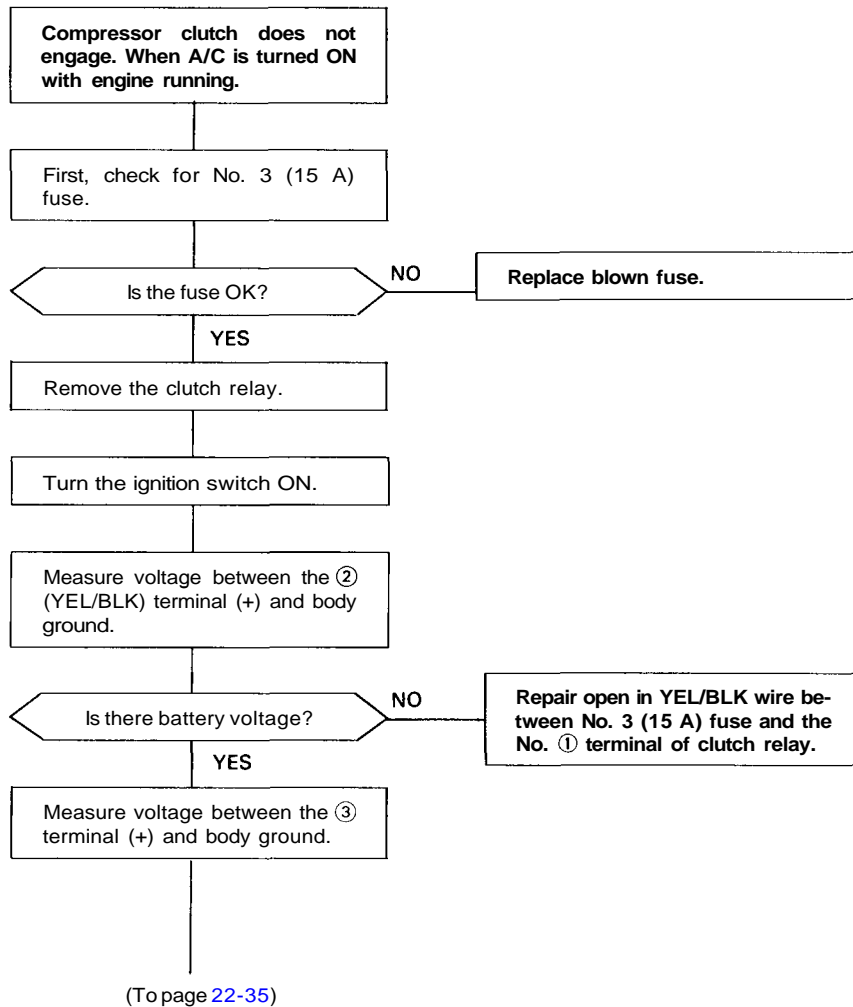
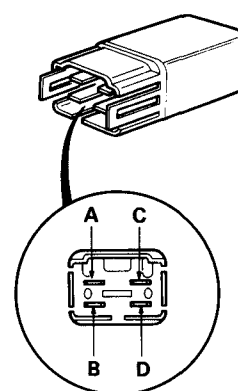
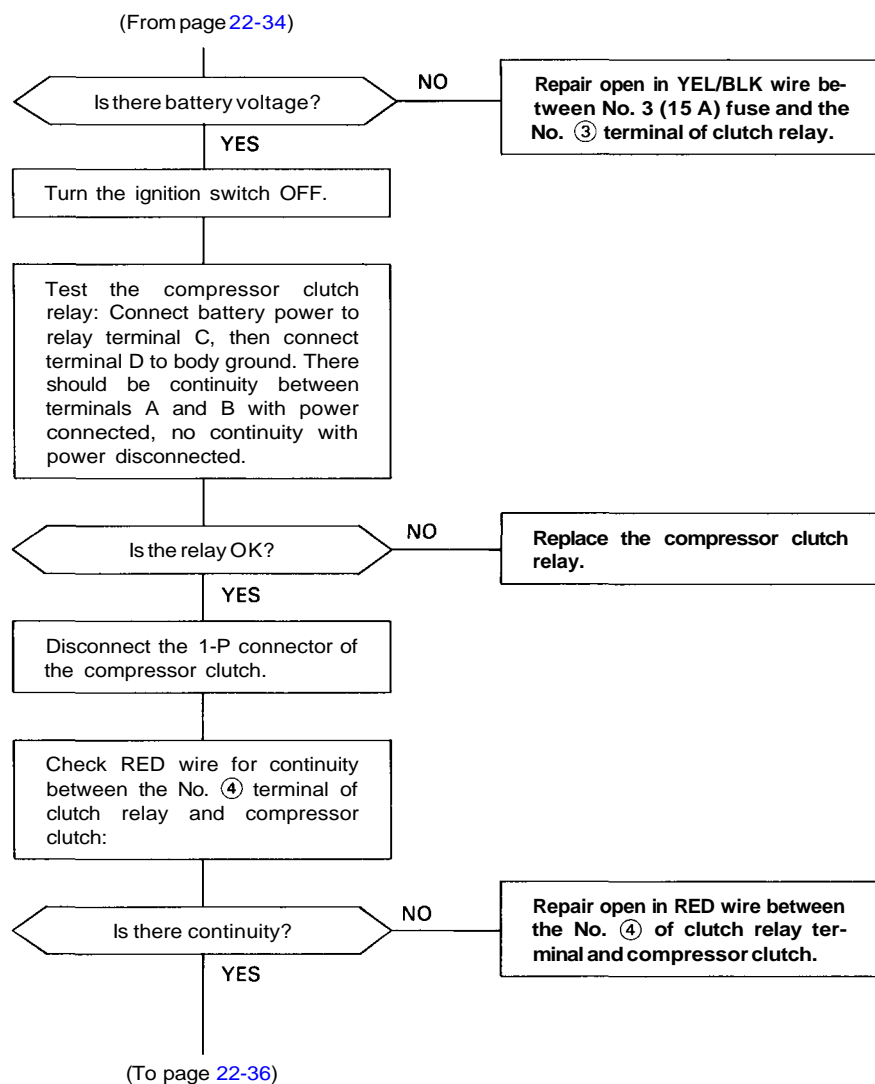


# Troubleshooting

## A/C Compressor

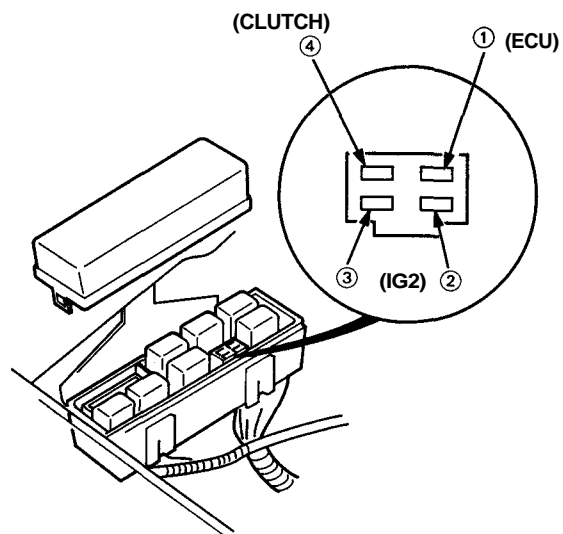
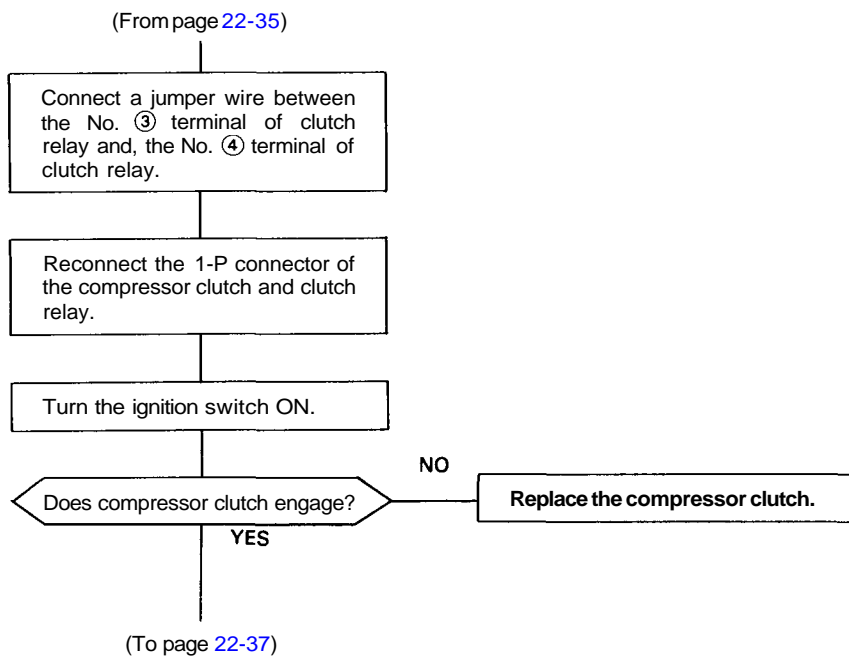




(cont'd)

# Troubleshooting

## A/C Compressor (cont'd)





(From page 22-36)

Turn the ignition switch OFF.

Disconnect the ECU connector and connect the ECU test harness.

Turn the ignition switch ON.

Turn the A/C switch OFF.

Measure the voltage between the A15 (+) terminal of ECU test harness and body ground (-).

Is there battery voltage?

NO

Repair open in the RED/BLU wire between the clutch relay and ECU terminal.

YES

Using a jumper wire, connect C3 test harness terminal to body ground.

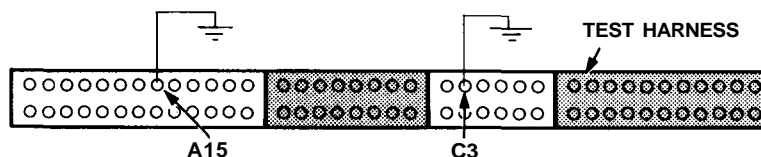
Does compressor/clutch engage?

NO

Substitute a known-good ECU and recheck. If symptom/indication goes away, replace the original ECU.

YES

(To page 22-38)

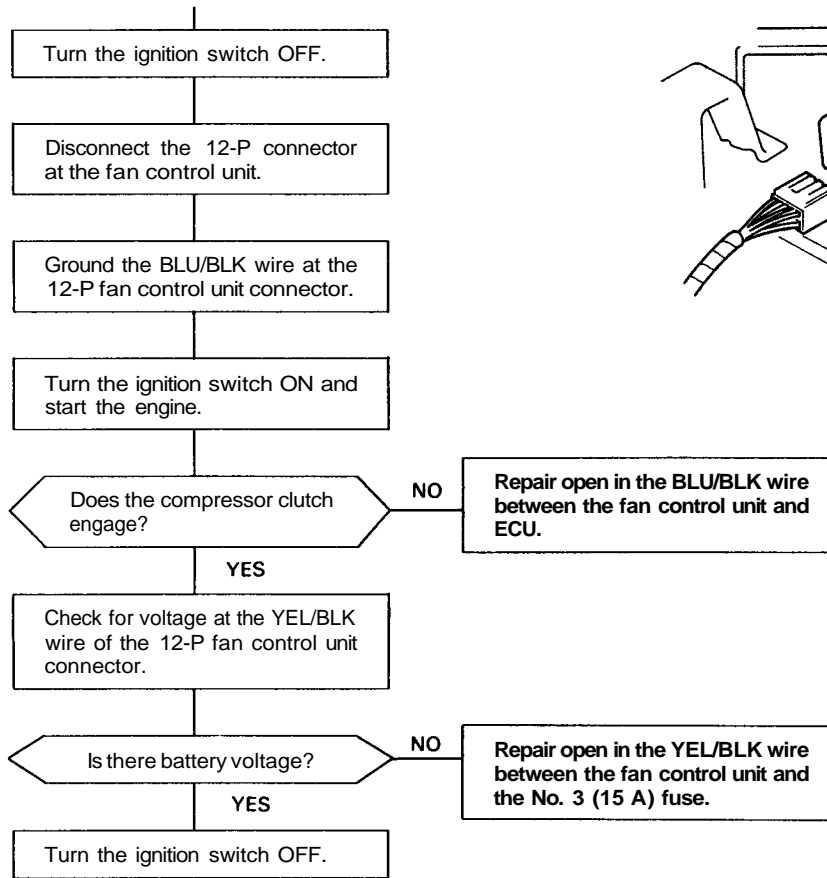


(cont'd)

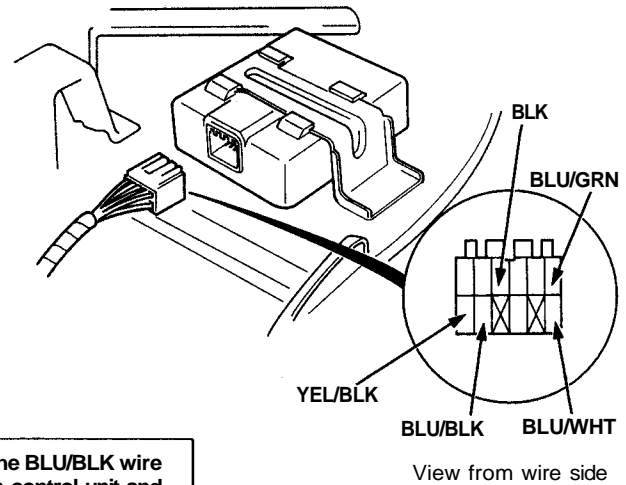
# Troubleshooting

## A/C Compressor (cont'd)

(From page 22-37)

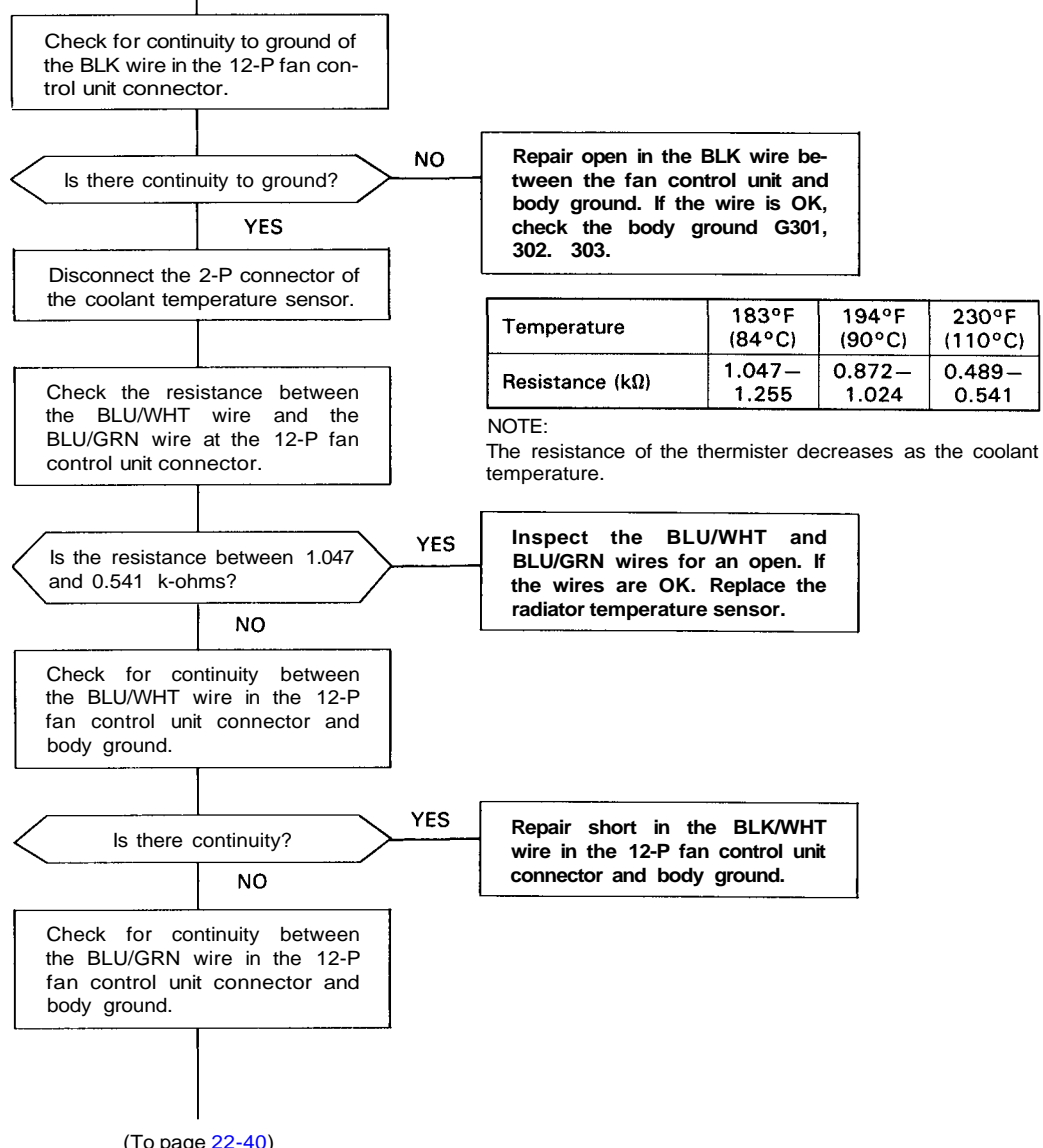


(To page 22-39)





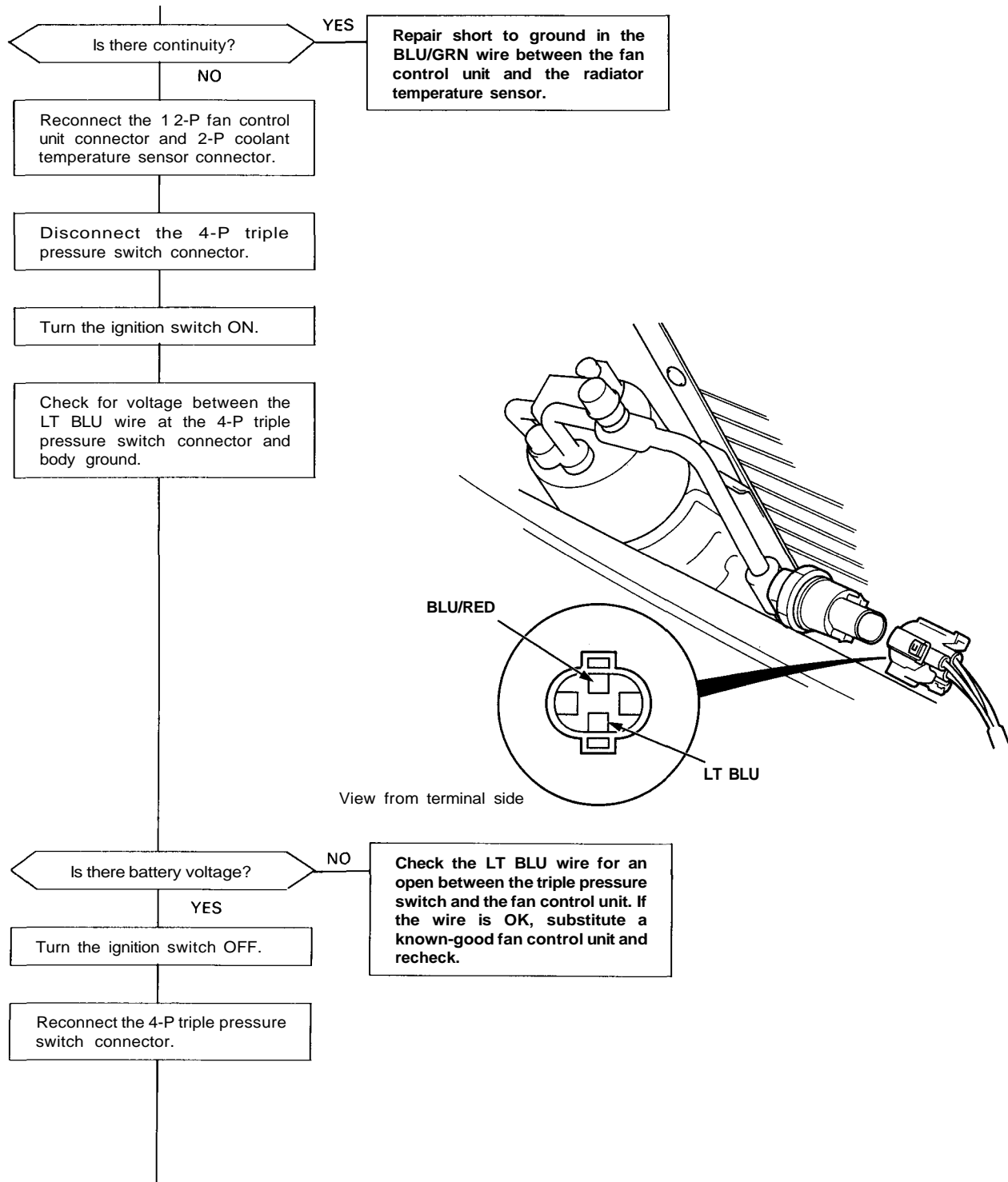
(From page 22-38)



# Troubleshooting

## A/C Compressor (cont'd)

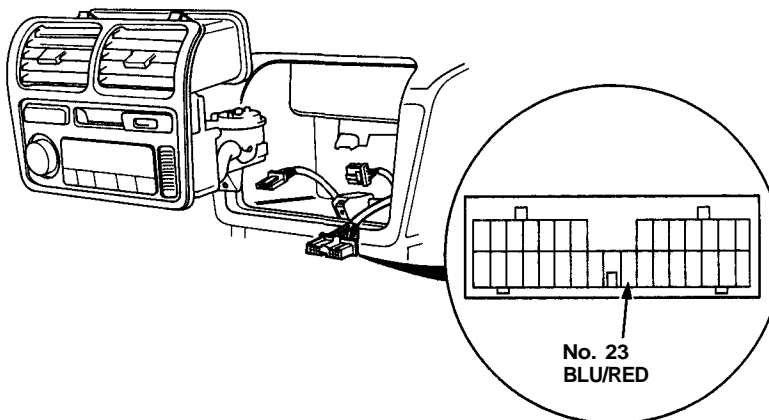
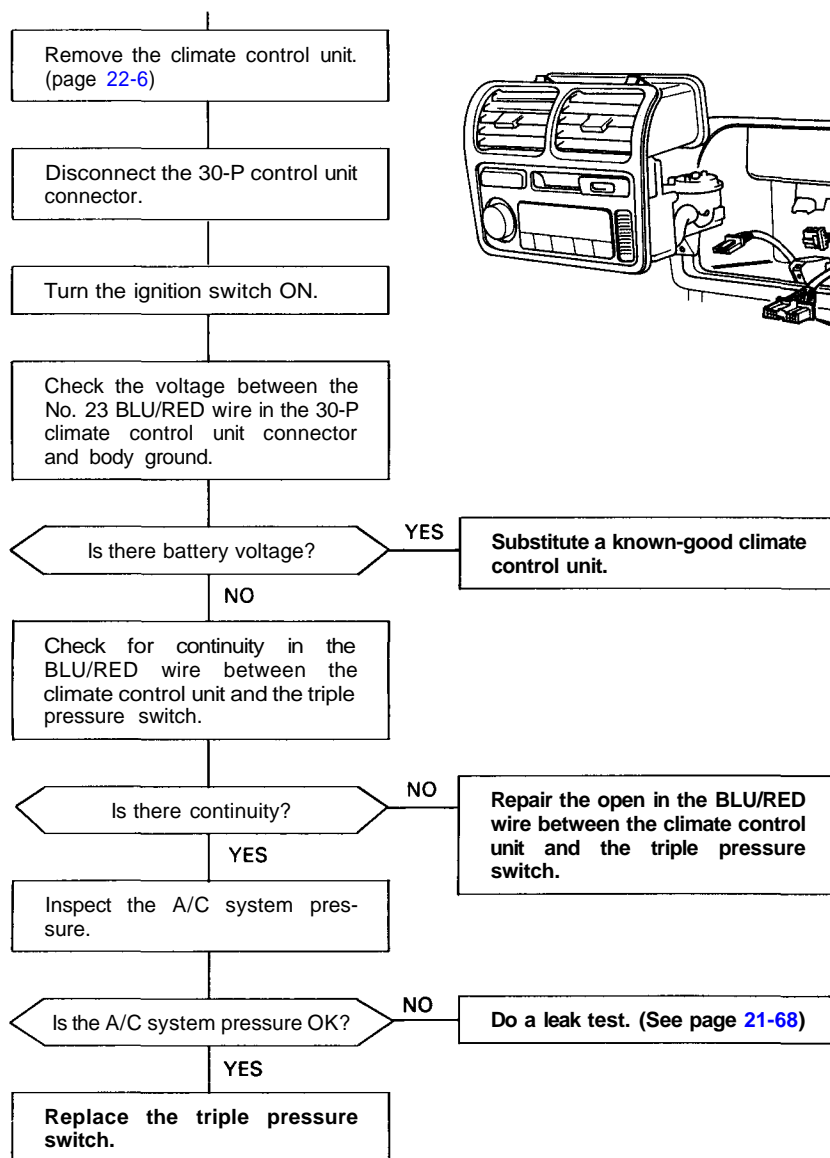
(From page 22-39)



(Topage 22-41)



(From page 22-40)



View from wire side